



COPPERHEAD

Powered By **DCC**

KWIK DRY



KWIK DRY



M&R's high quality thermal insulated Kwik Dry offers minimum heat loss and retains maximum heat inside the dryer. This vital feature truncates electrical cost and dries emulsion more expeditious.

The horizontal drying system maintains uniform emulsion thickness equipollently all over the screen. Drying cabinets mounted on roller bearing offers effortless movement.

Stainless steel support rods inside the drying cabinet purposefully kept slightly bend to evade physical contact of wet emulsion with those rods.

Uniform airflow with precision temperature controller ensures that the emulsion is dried adequately across the entire screen, leaving no chance of variation in exposing time.

M&R's Kwik Dry offers maximum utility with minimum efforts.

FEATURES

- 5 Cabinets To Dry Multiple Screen At A Time
- Double Wall Fabrication With Thermal Insulation
- Efficient Ducting System To Flush Out Hot Air
- Digital Temperature Controller
- Auto-timer Function To Control The Drying Time
- Screen Inspection Area

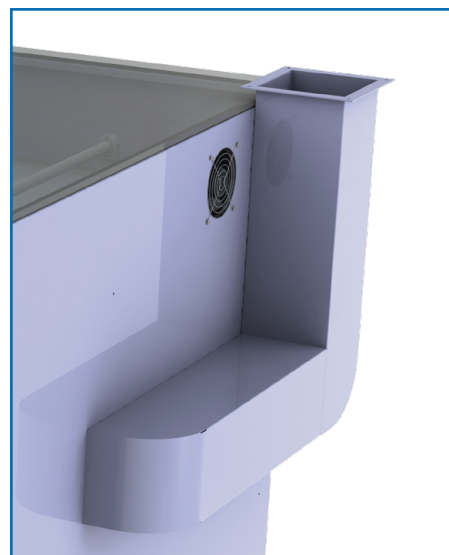
STANDARD FEATURES



Temperature controller & auto timer function to control the drying time



Five screen drying cabinets to dry multiple screens at a time



Ducting system to flush out hot air

Specification

Maximum Screen Frame Size	117 x 142 cm (46" x 56") OD
Maximum Temperature	60° C (140° F)
Auto Timer	0 – 60 Min
Electrical Requirements*	208-230 V, 1 ph, 22 A, 50 Hz, 4.06 kW
Dimensions (L x W x H)	213 x 142 x 119 cm (84" x 56" x 47")
Total Machine Weight	620 kg (1366.8 lb)

*Use servo stabilizer to safeguard machine from voltage fluctuation out of main supply

KWIK DRY



M&R Printing Equipment, Inc. 440 Medinah Road, Roselle, Illinois 60172-2329 USA

USA: 800-736-6431 / 630-858-6101 • **Outside USA:** +1-847-967-4461 • **FAX:** 630-858-6134